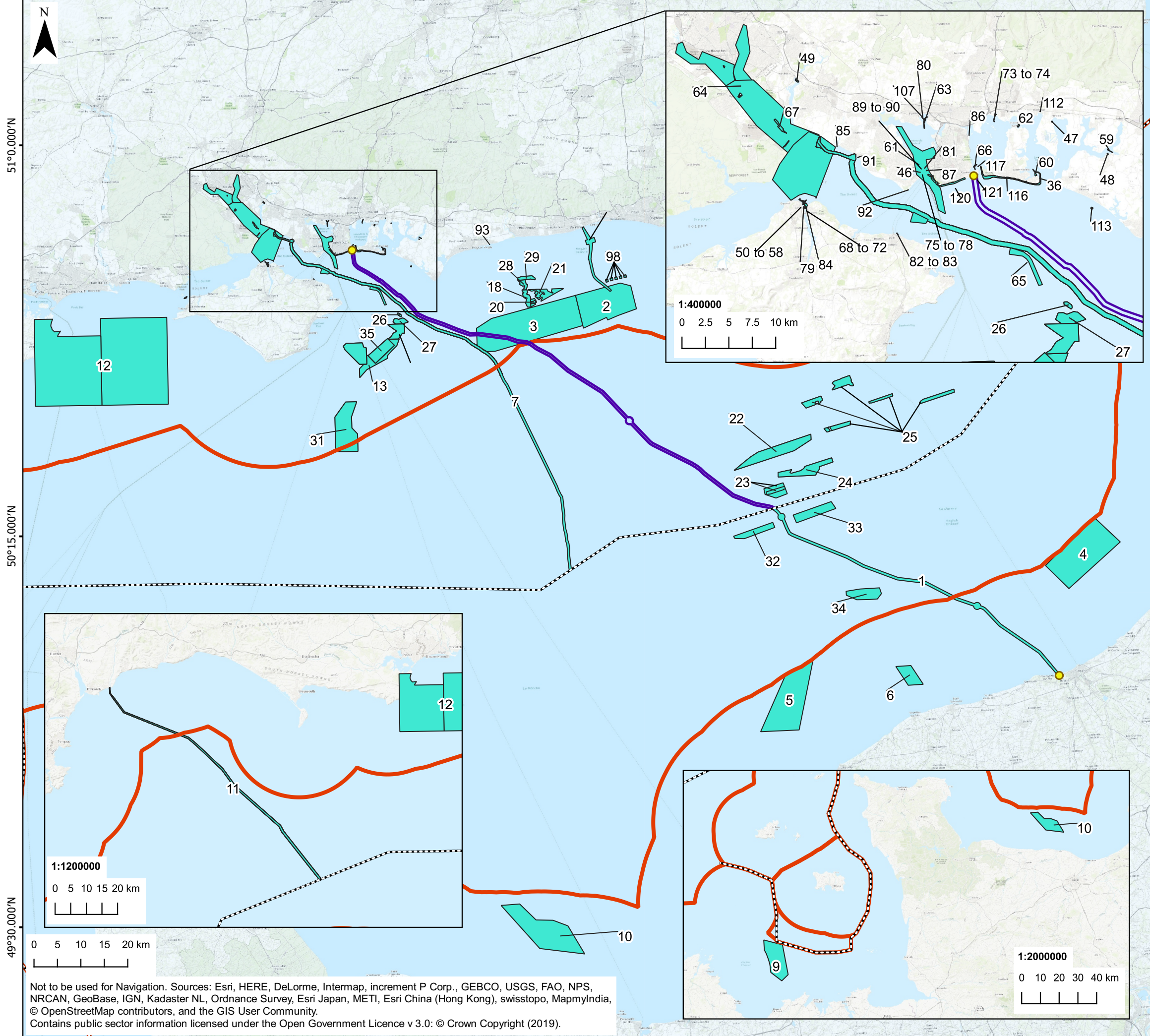


1°30.000'W

0°0.000'



AQUIND Interconnector

- Landfall location
- Marine Cable Corridor
- 12 nautical mile limit
- Exclusive Economic Zone (EEZ) boundary
- All projects (data from MMO, TCE, OGA, July 2019, updated October 2019)

Projects are shown where the whole or part of the dataset polygons are located within 230 km of the UK Marine Cable Corridor. Number labels reflect the ID number of each project shown in the cumulative assessment matrices.

The Infrastructure Planning (Environmental Impact Assessment) Regulations 2017.

01	23/10/2019	FM	FIRST ISSUE	EN	SL
REV	DATE	BY	DESCRIPTION	CHK	APP

DRAWING STATUS: **FINAL**



natural power

The Natural Power Consultants Limited, The Green House
Forrest Estate, Dalry, Castle Douglas, DG7 3XS, UK
Tel: +44 (0)1644 430008 www.naturalpower.com

CLIENT:



PROJECT: **AQUIND Interconnector**

TITLE: **Figure 8.1 Location of In Combination Marine Projects**

SCALE AT A3: 1:800000	CHECKED: ET	APPROVED: SL
--------------------------	----------------	-----------------

PROJECT NO: EN020022	DESIGNED: AJ	DRAWN: AJ	DATE: 23/10/2019
-------------------------	-----------------	--------------	---------------------

DRAWING NO: EN020022 - HRA - 8.1	REV.NO: 01
--	----------------------

GB201394_M_118_A

© WSP UK Ltd

Not to be used for Navigation. Sources: Esri, HERE, DeLorme, Intermap, increment P Corp., GEBCO, USGS, FAO, NPS, NRCAN, GeoBase, IGN, Kadaster NL, Ordnance Survey, Esri Japan, METI, Esri China (Hong Kong), swisstopo, MapmyIndia, © OpenStreetMap contributors, and the GIS User Community.
Contains public sector information licensed under the Open Government Licence v 3.0: © Crown Copyright (2019).

1°30.000'W

0°0.000'

49°30.000'N

50°15.000'N

51°0.000'N